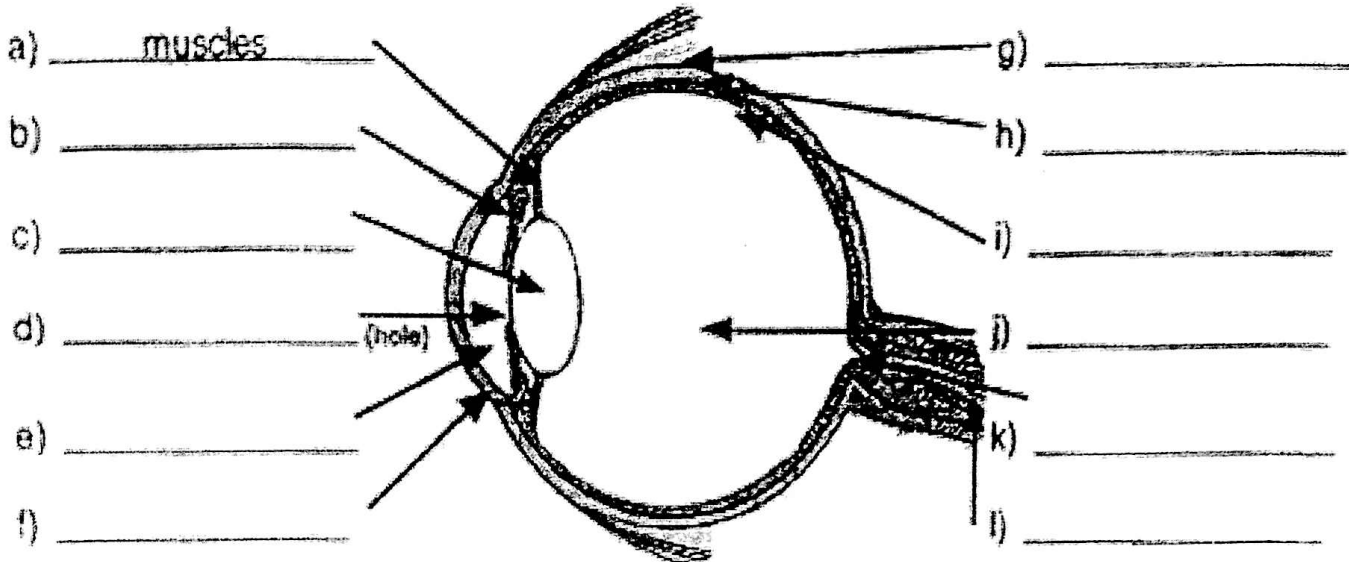


Label the diagram with the parts of a sheep eye.

iris	optic nerve	pupil	retina	vitreous humor	sclera
cornea	lens	aqueous humor	choroid	blind spot	muscles



2. Write the names of the actual eye parts. (Use the word bank above)

- a. colored part; regulates the amount of light _____
- b. tough, fibrous, white, outer protective covering of the eye _____
- c. delicate, light sensitive membrane of the eye; contains the rods and cones _____
- d. A transparent, biconvex body of the eye between the iris and the vitreous humor that focuses light rays

- e. part of the retina that is insensitive to light _____
- f. transmits visual information from the retina to the brain _____
- g. transparent membrane that covers the eye; light is refracted by this _____
- h. clear, gelatinous substance that fills the eyeball between the retina and the lens

- i. flexes and relaxes to move the parts of the eye _____
- j. watery fluid that circulates in the chamber of the eye between the cornea and the lens

- k. middle, vascular coat of the eye, between the sclera and the retina _____
- l. a circular opening that controls how much light enters the eye _____

Short Answer: Answer the following questions in COMPLETE sentences.

1. Describe what happens to a ray of light from the time it enters the eye and to the time the brain interprets it as an image. (Use these key terms: pupil, cornea, lens, retina, rods, cones and optic nerve)

2. Human eyes and sheep eyes are similar and different in several ways. Describe **two similarities** between the two eyes and describe **two reasons WHY the two eyes are different**.

Differences between Sheep eye and Human eye

While human eye has circular pupil, sheep eye has oval shaped pupil

Sheep eye has tapetum lucidum that is a layer of tissues causing reflection of light. This is lacking in human eye.

Sheep eye is placed sideways on its head whereas humans have forward facing eyes

Human beings have a better depth perception than sheep

Human eye has six muscles for eye movement whereas sheep have only 4 muscles to move their eyes.

Read more: <http://www.differencebetween.com/difference-between-a-sheep-eye-and-vs-human-eye/#ixzz1iu7eQ2pO>
